



# M.R. Enterprises

[www.mrgroupindia.co.in](http://www.mrgroupindia.co.in)



+91 9923026631  
+91 8208405529



[mrenterprisespune26@gmail.com](mailto:mrenterprisespune26@gmail.com)

[purchase@mrgroupindia.co.in](mailto:purchase@mrgroupindia.co.in)

## M.R. ENTERPRISES

We are a leading manufacturer of hydraulic system and related products.



[www.mrgroupindia.co.in](http://www.mrgroupindia.co.in)

[www.mrgroupindia.co.in](http://www.mrgroupindia.co.in)



## OUR PROFILE

We are leading Manufacturer & Exporter of India, We hope above in line will be best suited to your requirement. Please carefully go through the offer and do not hesitate to contact us if you have any doubt or require any further clarification/assistance. We are Providing Best Quality of Product at Economical cost backup with Warranty and best after Sales service. This effort made M. R. Enterprises, NANDI MACHINERY as most trusted brand in India and Worldwide.





## HYDRAULIC SHEARING MACHINE

The Hydraulic Shearing Machines are designed from ultrasonically tested IS 2062 grade steel structures. Our NM HVR Series Hydraulic Shearing Machine incorporates latest technologies with the high performance, simple operating device and is designed to function smoothly for a long time.

Robust construction gives more rigidity & strength to machines. These machines are capable to perform the accurate and precise cutting needs. The specially designed compact manifolds give smooth and silent operation.

NM HVR Hydraulic Shearing Machine equipped with the product features and safety devices for optimum, accuracy and repeatability.

### RANGE :

- ▶ Shearing Thickness - 02mm to 25
- ▶ Shearing Length - 1500mm to 7000 mm

### TECHNICAL FEATURES :

- ▶ Shearing Length 1500mm/ 2000mm/ 2500mm/ 3000mm/ 4000mm
- ▶ Shear Material MS / SS / ALUMINIUM / BRASS / COPPER
- ▶ Accuracy  $\pm 0.1$ mm / Meter
- ▶ Thickness Up to 4mm / 6mm / 8mm / 10mm / 12mm / 16mm / 20mm
- ▶ Back Gauge Length 600mm/ 1000mm and as Per Requirement

### PRODUCT FEATURES :

- ▶ Accurate clearance adjustment of both blades for BURS FREE shears.
- ▶ Manually/Motorized Back gauge for easy adjustment of shearing length.
- ▶ Better cutting accuracy in thin sheets at lower rake angle.
- ▶ Extra powerful clamping force by Holding Cylinders.
- ▶ International Quality Hydraulics Components, Special designed compact Manifolds gives Smooth & jerk less operations.
- ▶ Best Quality Electrical Components ensure trouble free Operation Over a Period of time.
- ▶ Pair of four edges HCHCR blade interchangeable & suitable to shear Mild Steel & Stainless Steel scale mounted on m/c.
- ▶ Fastest & Easiest Pre-Calibrated blade Clearance Setting for burs free Cutting.

### STANDARD ACCESSORIES INCLUDING WITH MACHINE:

- ▶ Flexible Sheet Support for Longer and Heavier Plates / Sheets.
- ▶ Pair of Blades Installed with machine
- ▶ Foot Switch for easier operation
- ▶ Majoring Scale For Smaller pieces at front
- ▶ Fine Stroke Adjustment rod with limit switch

# Hydraulic Shearing Machine

Model	Shearing Length	Sh.Thickness					Rake angle range	Strokes/minute at min. & max Rake angle	Hold downs	Holding force Kgs.	Power H.P.	Packing Dimension mm (LxWxH)
		M.S.		S.S.								
		Nominal rake angle	Maximum rake angle	Nominal rake angle	Maximum rake angle	Rake angle						
MRGC2502	2500	2	3.15	1	1.6	1°	0.5-2°	22-10	13	1800	3	2950X1650X1550
MRGC3002	3000	2	3.15	1	1.6	1°	0.5-2°	18-8	15	1800	3	3450X1650X1550
MRGC1503	1500	3.15	4	2	3	1°15'	0.5-2°	24-10	8	2000	5	2300X1900X2100
MRGC2503	2500	3.15	4	2	3	1°15'	0.5-2°	28-13	13	2500	5	3250X1900X2000
MRGC3003	3000	3.15	4	2	3	1°15'	0.5-2°	24-9	15	2500	5	3750X1900X2000
MRGC1504	1500	4	6	3	4	1°37'	0.5-3°	24-10	8	4500	5	2300X1900X2100
MRGC2004	2000	4	6	3	4	1°37'	0.5-3°	24-10	11	6200	7.5	2850X1950X2100
MRGC2504	2500	4	6	3	4	1°37'	0.5-3°	22-8	13	8000	7.5	3400X2350X2500
MRGC3004	3000	4	6	3	4	1°37'	0.5-3°	22-8	15	10000	10	3800X2350X2500
MRGC4004	4000	4	6	3	4	1°45'	0.5-3°	18-6	20	12000	10	4600X2350X2500
MRGC1506	1500	6	8	4	6	1°45'	0.5-3°	24-8	8	6500	10	2350X2000X2200
MRGC2006	2000	6	8	4	6	1°45'	0.5-3°	22-7	11	65000	10	2850X2000X2200
MRGC2506	2500	6	8	4	6	1°45'	0.5-3°	28-8	13	8500	15	3400X2350X2600
MRGC3006	3000	6	8	4	6	1°45'	0.5-3°	24-6	15	10800	15	3900X2350X2600
MRGC4006	4000	6	8	4	6	2°	0.5-3°	24-6	20	13600	20	4900X2350X2600
MRGC1508	1500	8	10	6	8	2°	0.5-3°	22-10	8	10500	15	2350X2150X2300
MRGC2008	2000	8	10	6	8	2°	0.5-3°	18-8	11	12000	15	2850X2150X2300
MRGC2508	2500	8	10	6	8	2°	0.5-3°	24-8	13	16500	20	3400X2450X2300
MRGC3008	3000	8	10	6	8	2°	0.5-3°	20-6	15	18500	20	4000X2550X2800
MRGC4008	4000	8	10	6	8	2°	0.5-3°	20-8	20	23000	30	4900X2450X2700
MRGC15010	1500	10	13	8	10	2°	0.5-3°	20-10	8	10500	15	2350X2150X2400
MRGC20010	2000	10	13	8	10	2°	0.5-3°	18-8	11	13500	15	2850X2150X2400
MRGC25010	2500	10	13	8	10	2°	0.5-3°	24-8	13	17500	20	3400X2600X2900
MRGC30010	3000	10	13	8	10	2°	0.5-3°	20-6	15	20000	20	3900X2600X2900
MRGC40010	4000	10	13	8	10	2°	0.5-3°	18-6	20	25000	30	4900X2600X2900
MRGC20013	2000	13	16	10	13	2°	0.5-3°	13-5	11	16500	20	2850X2300X2600
MRGC25013	2500	13	16	10	13	2°	0.5-3°	15-10	13	32000	25	3450X2750X2900
MRGC30013	3000	13	16	10	13	2°	0.5-3°	12-6	16	37000	25	3900X2700X2900
MRGC40013	4000	13	16	10	13	2°	0.5-3°	10-4	20	22000	30	4950X2300X2900
MRGC20016	2000	16	20	13	16	2°	0.5-3°	13-7	11	22000	25	2850X2300X2700
MRGC25016	2500	16	20	13	16	2°	0.5-3°	15-8	13	40000	30	3600X2700X3000
MRGC30016	3000	16	20	13	16	2°	0.5-3°	12-6	16	43500	30	4100X2700X3000
MRGC40016	4000	16	20	13	16	2°	0.5-3°	10-4	20	30000	30	5200X2850X3000





## NC HYDRAULIC SHEARING MACHINE

NC shearing machine has all the advantages of hydraulic shearing machine (Semi-Automatic). The machines are supplied with easy to use axis NC Controlled heavy duty back gauge (Range 760 MM) with PLC based controller nisi ut aliquip ex ea commodo consequat dui aute irure dolor in reprehenderit.

The machine productivity and accuracy are much improved with NC controlled back gauge. The fast and accurate multi position back gauge system is very efficient and accurate.

### RANGE :

- ▶ Shearing Thickness - 02mm to 25 mm
- ▶ Shearing Length - 1500mm to 7000 mm

### TECHNICAL FEATURES :

- ▶ Shearing Length - 1500mm/ 2000mm/ 2500mm/ 3000mm/ 4000mm
- ▶ Shear Material - MS / SS / ALUMINIUM / BRASS / COPPER
- ▶ Accuracy -  $\pm 0.1$ mm / Meter
- ▶ Thickness - Up to 4mm / 6mm / 8mm / 10mm / 12mm / 16mm / 20mm
- ▶ Back Gauge Length - 600mm / 1000mm and as Per Requirement

### PRODUCT FEATURES :

- ▶ HMI with 2 Line 16 character LCD monochrome screen & numeric keypad.
- ▶ Multi steps back gauge position program.
- ▶ Stroke Counter & Control on Screen.
- ▶ Hardened Ground Ball screw & Linear motion bearings.
- ▶ Rake angle adjustment through selector switch.
- ▶ Hardened ground Ball screw with better position accuracy.
- ▶ Linear motion bearings for smooth & accurate guiding.
- ▶ Various drives interface like two-speed motor, stepper motor/AC servo motor.

### STANDARD ACCESSORIES INCLUDING MACHINE :

- ▶ HMI With 2 Line 16 Character LCD Monochrome Screen & Numeric Keypad.
- ▶ Hardened Ground Ball Screw & Linear Motion Bearings.
- ▶ Lever Operated Blade Clearance With Calibration.
- ▶ Rake Angle Selection Through Selector Switch.
- ▶ Stroke Adjustment Through Screen & Stroke Counter Meter.



## HYDRAULIC PRESS-BRAKE MACHINE

MR Enterprises Hydraulic Press Brakes are highly productive, accurate, and economical. Through advanced design and construction, Nandi Machinery offers quality Hydraulic Press Brakes that provide simplified and easily accessible controls for optimum operator efficiency and output.

Pair of hydraulic cylinders is synchronized mechanically by a heavy-duty torque tube construction. This facility ensures absolute parallelism between ram and table working surface.

These press brakes are manufactured to high standards of lifetime durability and precision accuracy.

### RANGE :

- ▶ Tonnage - 20MT to 600MT
- ▶ Length - 1500mm to 6000 mm

### TECHNICAL FEATURES :

- ▶ Bending Length (mm) 1500mm/2000mm/2500mm/3000mm/4000mm
- ▶ Accuracy  $\pm 0.03$ mm
- ▶ Thickness - Up to 4mm / 6mm / 8mm / 10mm / 12mm / 16mm / 20mm
- ▶ Back Gauge Length - As per requirements

### PRODUCT FEATURES :

- ▶ Accurate right angle welded steel frame with tested material gives accurate bending.
- ▶ Accurately Synchronized cylinders for equally vertical force of RAM at full length.
- ▶ Use of hardened Pin and Bushes gives less maintenance.
- ▶ Flexible sheet support for longer and heavier plates/sheets.
- ▶ Emergency stop push switch with moveable console including motor on/off, RAM up/ down & cycle selection switch.
- ▶ Three Operating Mode – Auto, Inch & Single cycle.
- ▶ Centrally lubrication system by Hand pump at all pin, bushes and joints.
- ▶ Five way V- Block (EN-31) in one and suitable Blade.
- ▶ Fine stroke adjustment Rod with limit switches.

### STANDARD ACCESSORIES :

- ▶ V-Block Die & Punch
- ▶ Operating Mode
- ▶ Backgauge With Micro Setting
- ▶ Front Sheet Support
- ▶ Centralized Lubrication System By Manual Pump



# Hydraulic Press Brake Machine

Model	Tonnage	Table Length	Bending Capacity (In MS, UTS 45 kg/mm <sup>2</sup> )		Table width		Clear Pass		Ram stroke	Open Height	Throat Depth	Speed Approach passing return	Power HP	Packing Dimensions (W x H x L)		
			mm	mm	mm	mm	mm	mm						mm	mm	mm
		A			B	C	D	E	F			mm/sec		G	H	I
MRPB1520	20	1500	1.6X1500	2X1250	150	1050	100	250	200	25-7-30	3	1800X1150X2000				
MRPB2030	30	2000	2X2000	3X1250	150	1550	100	250	200	23-6-30	3	2300X1250X2000				
MRPB2540	40	2500	2X2500	3x1500	150	2050	100	250	200	23-6-30	5	2800x1250x2000				
MRPB1550	50	1500	4X1500	5x1250	190	1050	100	250	200	23-6-30	5	1800x1250x2000				
MRPB2050	50	2000	3X2000	4x1500	190	1550	100	250	200	23-6-30	5	2300X1250X2000				
MRPB2550	50	2500	2.5X2500	3x2000	190	2050	100	250	200	23-6-33	5	2800x1250x2000				
MRPB2565	65	2500	3X2500	4x2000	190	2050	150	330	200	28-4-30	5	2800x1300x2100				
MRPB3065	65	3050	2.5X3000	3x2500	190	2550	150	330	200	28-4-30	5	3450x1300x2100				
MRPB2580	80	2500	4X2500	5x2000	190	2050	150	330	200	35-5-43	7.5	2800x1650x2400				
MRPB3080	80	3050	3X3000	4x2500	190	2550	150	330	200	35-5-43	7.5	3450x1650x2400				
MRPB25100	100	2500	5X2500	6x2000	190	2050	150	330	200	35-5-43	7.5	2800x1650x2400				
MRPB30100	100	3050	4X3000	5x2500	190	2550	150	330	200	35-5-43	7.5	3450x1650x2400				
MRPB40100	100	4050	3X4000	4x3000	250	3250	150	330	200	35-5-43	7.5	4350x1750x2400				
MRPB25125	125	2500	6X2500	8x2000	250	2150	150	350	300	35-4-38	10	2850x1750x2600				
MRPB30125	125	3050	5X3000	6x2500	250	2650	150	350	300	35-4-38	10	3450x1750x2600				
MRPB40125	125	4050	4X4000	5x3000	250	3250	150	350	300	35-4-38	10	4300x1750x2600				
MRPB25160	160	2500	8X2500	10x2000	300	2150	150	350	300	32-4-38	15	2850x1900x2700				
MRPB30160	160	3050	6X3000	8x2500	300	2650	150	350	300	32-4-39	15	3450x1900x2700				
MRPB40160	160	4050	5X4000	6x3000	300	3250	150	350	300	32-5-39	15	4450x1900x2700				
MRPB25200	200	2500	10X2500	12x2000	300	2150	200	400	300	32-6-33	20	2950x2150x2850				
MRPB30200	200	3050	8X3000	10x2500	300	2650	200	400	300	32-6-33	20	3450x2150x2850				
MRPB40200	200	4050	6X4000	8x3000	300	3250	200	400	300	32-6-33	20	4450x2150x2850				
MRPB30250	250	3050	10X3000	12x2500	350	2650	200	400	300	32-5-39	25	3450x2200x2900				
MRPB40250	250	4050	8X4000	10x3000	350	3250	200	400	300	32-5-39	25	4450x2200x2900				
MRPB30300	300	3050	12X3000	15x2500	350	2650	200	400	300	28-5-33	30	3450x2250x3000				
MRPB40300	300	4050	10X4000	12x3000	350	3250	200	400	300	28-4-31	30	4450x2250x3000				
MRPB30400	400	3050	16X3000	20x2500	350	2650	250	500	350	28-4-31	40	3450x2300x3100				
MRPB40400	400	4050	12X4000	16x3000	350	3250	250	500	350	28-4-31	40	4450x2300x3100				



## NC HYDRAULIC PRESS BRAKE MACHINE

NC hydraulic Press brakes are economical and very reliable solution for industry demand. NC hydraulic press brakes are designed to give more accuracy and better productivity. The controller has a facility to program the various jobs with complex bending sequence on screen.

The Numeric Control is used for Two Axis Control,  
1. Y - Ram Axis 2. X-Back Gauge Axis

The program gives facility to bend different bending degrees; different back gauge positions & different open positions. It has a facility to save different programs and same can be reloaded as & when required. The back gauge consists of Flip-top Fingers, Ball Screw & Linear Bearing along with drive.

### RANGE :

- ▶ Tonnage - 20MT to 600MT
- ▶ Length - 1500mm to 6000 mm

### TECHNICAL FEATURES :

- ▶ Bending Length (mm) 1500mm/2000mm/2500mm/3000mm/4000mm
- ▶ Accuracy  $\pm 0.03$ mm
- ▶ Thickness Up to 4mm / 6mm / 8mm / 10mm / 12mm / 16mm / 20mm & more
- ▶ Back Gauge Length As Per Requirements.

### PRODUCT FEATURES :

- ▶ It has a facility to program the variegated jobs includes complex bending sequence.
- ▶ This facility helps to perform complicated bending job in a signal setting and repeatable production.
- ▶ Dedicated controller with LCD monochrome screen & numeric keypad.
- ▶ Bend angle & Depth Mode program.
- ▶ 128 Programs x 16 bends per program can be stored.
- ▶ Stroke control and stroke counter on screen.
- ▶ Highly Precise press brake scale for accurate Y- axis positioning.
- ▶ AC Servo drive for back gauge positioning.
- ▶ Hardened ground Balls screw and linear motion bearing for better position accuracy and longer life.

### STANDARD ACCESSORIES :

- ▶ NC Operating Mode – 2-Axis Controller
- ▶ V-Block Die & Punch
- ▶ Operating Mode
- ▶ Backgauge With Micro Setting
- ▶ Front Sheet Support
- ▶ Centralized Lubrication System By Manual Pump





## CNC SYNCHRO HYDRAULIC PRESS-BRAKE MACHINE

CNC Synchro press brakes are designed to give more accuracy and better productivity. The controller has a facility to program the various jobs with complex bending sequence on screen. The CNC Control is used for Three Axis Control or more.

- ▶ Synchronized Ram Axes Y1 & Y2
- ▶ Y Back Gauge Axis-X

The program gives facility to bend different bending degrees; different back gauge positions & different open positions. It has a facility to save different programs and it can be reloaded as & when required. The back gauge consists of Flip-top Fingers, Ball Screw & Linear Bearing along with drive.

### RANGE :

- ▶ Tonnage - 20MT to 600MT
- ▶ Length - 1500mm to 6000 mm

### TECHNICAL FEATURES :

- ▶ Bending Length (mm) 1500mm/2000mm/2500mm/3000mm/4000mm
- ▶ Accuracy -  $\pm 0.03$ mm
- ▶ Thickness - Up to 4mm / 6mm / 8mm / 10mm / 12mm / 16mm / 20mm & more
- ▶ Back Gauge Length - As Per Requirements

### PRODUCT FEATURES :

- ▶ World class dedicated controller from Delem or Cybelec.
- ▶ 3 or more axis control i.e. ram axis Y1, Y2 & Back gauge axis x.
- ▶ Bend angle & Depth Mode program.
- ▶ Highly Precise press brake scale for Y1, Y2 axis.
- ▶ Close loop proportional hydraulics for ram synchronization.
- ▶ Hardened & ground Multi Die & Punch.
- ▶ Quick release die clamps.
- ▶ Highly Precise proportional valve to control accurate beam movement.
- ▶ The power pack is supplied by Hoerbiger.
- ▶ Back gauge consist of hardened & ground ball screw, linear motion bearings and AC servo drive for accurate position up to 0.05 mm.

### STANDARD ACCESSORIES :

- ▶ CNC Operating Mode – 3-Axis Controller
- ▶ V-Block Die & Punch
- ▶ Operating Mode
- ▶ Backgauge With Micro Setting
- ▶ Front Sheet Support
- ▶ Centralized Lubrication System By Manual Pump



## UNIVERSAL BENDING MACHINE

The Versatility of the 20 Tons Horizontal Press Brake 'MR Enterprises' allows us to bend, fold, cut and shape in cold, stretch and reduce, inlay, notch and assemble. Horizontal Bending Press Brake NM200 has been manufactured in a 60mm thick welded steel monoblock, stabilized and mechanized. Its robustness, versatility and easy handling are just three of the best features our hydraulic horizontal bending machine has.

### ADVANTAGES :

- ▶ **Easy Handling :** The machine is sent completely assembled, it is only necessary to connect it to the required power Supply and start Performing.
- ▶ **Easy fabrication of tooling :** The customer himself or any toolmaker can manufacture dies and punches.
- ▶ **Folding operation with no risk of damaging the punches and dies with thick materials** unlike conventional press brakes.
- ▶ **Folding flat bars and sheets into completely close shapes.** Conception of this horizontal bending press brake allows to make folding operations impossible to be carried out on a conventional press brake.
- ▶ **Fast tool change, Punches and dies :** This change does not take more than 30 seconds most of the times.

### TECHNICAL CHARACTERISTICS :

- ▶ Electric Motor 2.2 KW / 3 HP / 1400r.p.m
- ▶ Three-phased tension 230 / 400 V
- ▶ Working strength 20.000 Kg / 200 KN
- ▶ Repetitivity 0.05 mm

### ADDITIONAL INFORMATION :

The advantage of the Horizontal Bending Press is to have a really simple head drive so that all our customers can adapt any die manufactured by themselves. To add more options when fastening tools, the workbench has a series of clamping holes distributed throughout the area to ease up the fixing.







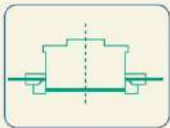
## HYDRAULIC C-FRAME PRESS MACHINE

### SPECIFICATION :

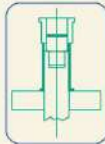
MODEL No.	IN TERMS	POWER-C5	POWER-10	POWER-C15	POWER-025	POWER-C40	POWER-C60
MAX FORCE	Tons	5	10	15	25	40	60
RAM STROKE (A)	MM	125	150	150	175	200	200
DAYLIGHT (D)	MM	175	200	200	300	350	350
TABLE SIZE (C X D)	MM	250x200	300x250	350x300	400x300	450x350	500x400
WORKING PRE.	KG/SQ.CM	63	127	157	163	200	240
OPEN THROAT (F)	MM	125	150	175	200	225	250
SHUT HEIGHT (E)	MM	50	50	50	125	150	150
RAM SPEED							
a) APPROACH	MM/SEC	***	***	***	***	25	25
b) PRESSING	MM/SEC	7	7	10	6	4.5	3.5
c) RETURN	MM/SEC	10	10	13	9	7.5	5
ELECTRIC MOTOR	HP	0.5	1	2	2	3	3

The C-Frame press can be an economical alternative for producing or assembling small parts. These workhorse presses are also self contained as to be easily moved to the work cell. Many options and sizes available to tailor the press to your requirements. Savage C Frame presses feature a ram adaptor with anti rotation. Savage Guided C Frame presses are available with 2 post and 4 post guided platens.

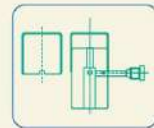
### APPLICATION :



Blanking



Piercing



Notching

### NOTE :

- ▶ Customized attachments can be provided as per specific requirement.
- ▶ We also manufacture these machine with PLC & NC Controls.
- ▶ We reserve the rights to change or alter the specifications as may be necessitated with out prior notice.



## HYDRAULIC IRON-WORKER

	PARTICULAR	IW - 45	IW - 55	IW - 65	IW - 85	IW - 110	IW - 135
<b>PUNCHING</b>	Punching Pressure	45 Ton	55 Ton	65 Ton	85 Ton	110 Ton	135 Ton
	Punch Capacity	20 x 15	22 x 16	22 x 20	26 x 22	26 x 26	33 x 27
	Diameter X Thickness	35 x 8	45 x 8	50 x 9	50 x 12	50 x 15	50 x 18
	Throat Depth In S/SD Model	175 / -	275 / -	310 / 510	310 / 510	310 / 510	- / 570
	Maximum Stroke Length	60	100	100	100	100	100
	Cycles/min. (20mm Stroke)	30	25 / 32	20	21	21	20
	Working Height Up to Die	910	910	910	950	950	1020
<b>FLAT SHEARING</b>	Flat Bar Shear	250 x 8	33 x 12	350 x 15	460 x 15	610 x 16	610 x 18
	Width X Thickness	180 x 12	240 x 12	240 x 20	300 x 20	400 x 20	400 x 25
	Blade Length	260	310	360	465	620	620
	Angle Flange Trim	65	65	75	100	100	100
	Working Height	800	820	920	920	950	950
<b>ANGLE SHEARING</b>	At 90 Shearing	80x80x8	100x100x10	130x130x13	152x152x13	152x152x15	152x152x18
	At 45 Miter Shearing	50x50x6	50x50x6	65x65x8	80x80x10	80x80x10	80x80x10
	Working Height	1080	1080	1150	1150	1150	1160
<b>BAR SHEARING</b>	Round Bar Shear (Dia.)	25	32	40	50	50	50
	Square Bar Shear	25 x 25	32 x 32	38 x 38	50 x 50	50 x 50	50 x 50
	Channel Shear	/	100*	130*	152*	152*	180*
	I Beam Shear	/	100*	130*	152*	152*	180*
	Working Height	1150	1150	1300	1300	1315	1315
<b>NOTCHING</b>	Rectangular (W x D x T)	30x60x5	50x90x6	50x90x9	50x90x12	63x90x12	63x90x13
	Vee - Notcher (Side x Side x T)	60x32x6*	80x50x9	90x90x8	90x90x10	105x105x12	105x105x13
	Large Vee - Notcher (Side x Side x T)	/	/	145x145x8	145x145x10	145x145x12	145x145x13
	Working Height	850	850	850	860	860	860
<b>OTHER</b>	Electric Power (HP)	5 HP	5 / 7.5 HP	7.5 HP	10 HP	10 HP	15 HP
	Net Weight(Aprox.) S/SD	1800 Kg	2300 Kg	3100 Kg	3250 Kg	3900 kg	4200 Kg
	Machine Dimension(Aprox.)(LxWxH)	1360x700x1450	1750x750x1800	1970x800x2000	2100x820x2080	2340x860x2110	2420x980x2150

Based on Material Strength of 450 N/MM<sup>2</sup> | (\*) Optional



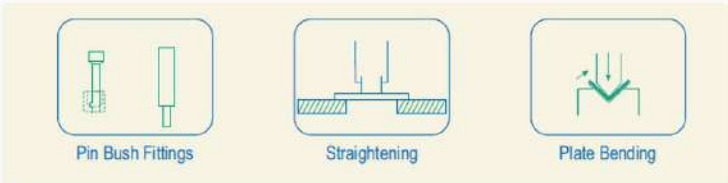


## HYDRAULIC H-FRAME PRESS MACHINE

### SPECIFICATION :

MODEL No.	IN TERMS	POWER-H5	POWER-H15	POWER-H25	POWER-H40	POWER-H60	POWER-H75	POWER-H100	POWER-H150	POWER-H200
Capacity	Tons	5	15	25	40	60	75	100	150	200
Stroke in hand operate (E)	MM	100	100	125	150	150	150	150	***	***
Stroke in Power operate (E)	MM	100	175	200	200	200	200	200	200	250
ADJ Daylight (min. to max.) (A X B)	MM	75x430	150x750	175x800	175x900	175x900	175x900	175x900	200x1000	400x1200
Distance Bet. Column (CXD)	MM	480x200	750x200	800x280	950x375	1010x425	1125x450	1200x500	1300x600	1400x700
ELEC.MOTR IN POWER OPP.	HP	0.5	2	2	3	3	5	5	7.5	10
Working Pressure	KG/SQ.CM	75	160	165	200	240	240	240	240	250
RAM SPEED (IN POWER OPP)	APPROCH	MM/SEC	***	***	***	***	***	***	12	12
	PRESSING	MM/SEC	7	10	6	4.5	3.5	4.5	3.5	3
	RETURN	MM/SEC	10	13	9	7.5	5	6.5	15	15
Total Weight (Approx.)	KG	120	360	475	625	1050	1250	1600	2400	3200

### APPLICATION :



### NOTE :

- Standard accessories : V Blocks ( 2 Nos )
- Customized attachments can be provided as per specific requirement.
- We also manufacture these machine with PLC & NC Controls.
- We reserve the rights to change or alter the specifications as may be necessitated with out prior notice.



## CONTACT US

Gat no-75, Wageshwar Colony, Behind MNGL Station  
(GEL INDIA), Near Gold-Field Mall, Borhade Wasti,  
Moshi. Pune-412105

P : (+91) 9923026631, 8208405529

E : mrenterprisespune26@gmail.com

Purchase@mrgroupindia.co.in

W : www.mrgroupindia.co.in